



# STEP UP

EST. NW 1964  
**PODIATRIC**  
LABORATORY



TM

# You've got THEIR FEET. We've got YOUR BACK.



## A partner in your success

Since 1964, we've empowered thousands of healthcare professionals to help millions of people suffering from foot pain. We help you be the hero.



## Real customer service

Call our Customer Care team and you'll get the best in the business – friendly professionals with decades of combined experience.



## We know orthotics

Creating world-class custom orthotics is an art and science requiring talent and experience. Our technicians shape every plane and contour for a perfect fit, every time.

## SMARTCAST.<sup>®</sup> BRINGING *speed & science* TOGETHER.



**Step #1**  
Position the patient



**Step #2**  
Scan the feet



**Step #3**  
Submit the order

WE MAKE ORTHOTICS EASY

## Incomparable PRODUCTS. UNRIVALED *results.*

### CUSTOM ORTHOTICS



#### Superglass<sup>®</sup>

Our legendary composite shell. Crafted with aerospace-inspired materials and only 1.5mm thin, Superglass fits in nearly any footwear.

#### Polypropylene

A durable and trusted shell material taken to the next level with our sleek design, proven shape, and excellent patient outcomes.



#### NCV<sup>®</sup>

Great support and in-shoe comfort thanks to our proprietary carbon fiber-reinforced engineered nylon. Only 1.5 to 2.5mm thin.

#### Prescription Comfort<sup>®</sup>

Accommodative orthotics with internal reinforcement to prevent loss of shape. A unique hybrid that's soft AND supportive.



### OTC ORTHOTICS



#### Premium OTC<sup>®</sup>

Thin and versatile OTC orthotics crafted with our exclusive composite.



#### Elite OTC<sup>®</sup>

An all-around performer featuring a strong shell and integrated heel post.



#### Children's OTC

Durable and fun orthotics for children ages 18 months to 8 years.

### BRACES

We are proud to offer the gold standard in custom AFOs, the Richie Brace<sup>®</sup>. Choose from popular models like Standard, Dynamic Assist, Gauntlet, or AeroSpring. To explore the full range of braces, visit [richiebrace.com](http://richiebrace.com).



Standard



Dynamic Assist



Gauntlet



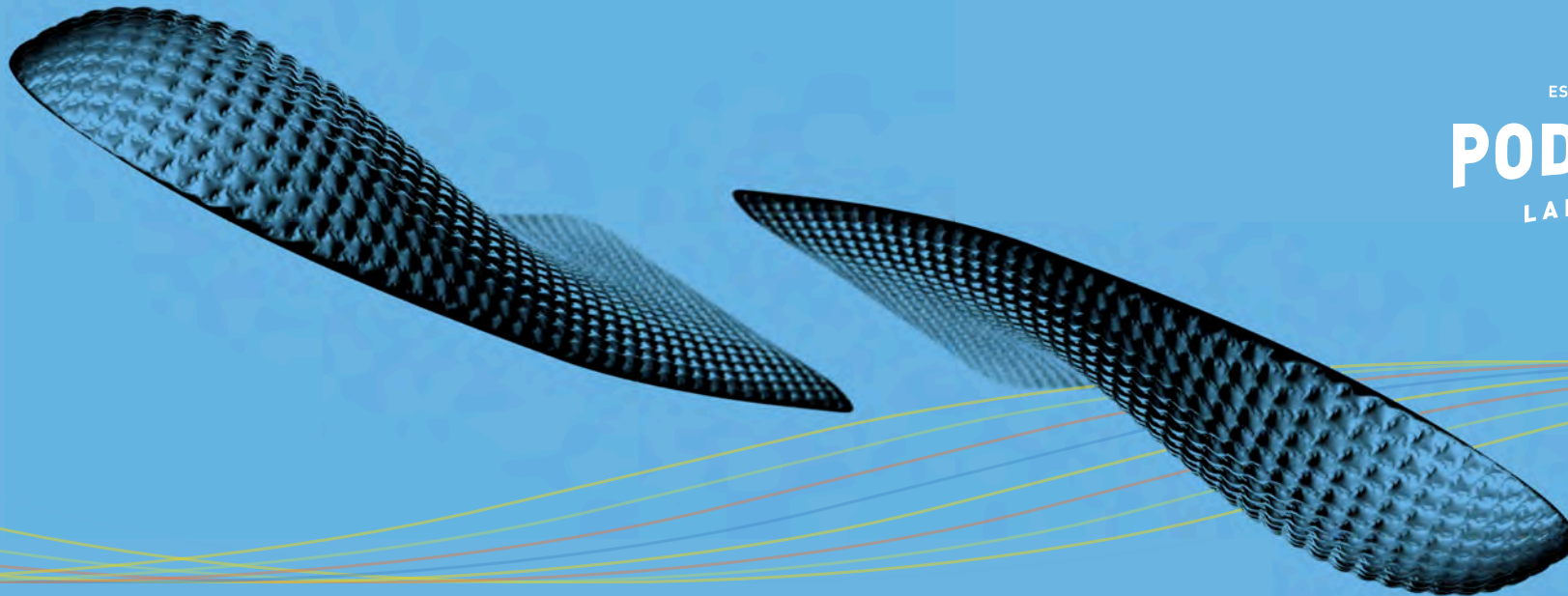
AeroSpring





EST. NW 1964

# PODIATRIC LABORATORY



## GLEN BEEDE, DPM

Trinity Foot & Ankle / Fort Worth, TX

"I have been using Northwest Podiatric Lab since 1998. They have consistently exceeded my expectations in every aspect of business including technical support. I can't recommend this company highly enough! I started with them in my practice and I will retire with them as my orthotic vendor!!"



[nwpodiatric.com](http://nwpodiatric.com)

# WE ARE THE LEADER IN THE DESIGN & MANUFACTURE OF PREMIUM CUSTOM FOOT ORTHOTICS.

Located off the beaten path in the far northwest corner of Washington State, we've always been a little outside of the mainstream: obsessively high standards, one-of-a-kind manufacturing processes and outside-the-box thinking.



## The Inventor

In 1964, Dennis Brown, retired British soldier, elite athlete and natural-born inventor, bought a fledgling custom orthotic lab and immersed himself in the field of orthotics and set out to reinvent how they could be made.



## The Expert

In 1974, Dennis invited renowned expert and biomechanics pioneer, Dr. Chris Smith, from the California College of Podiatric Medicine to be his partner. Chris' well-regarded credentials gave NWPL instant credibility, and his knowledge of the foot's function proved invaluable in new product development.



## The Innovations

Using knowledge gained while working with carbon fiber, NWPL created a new top-tier product with a combination of fiberglass and graphite, called Superglass®. Out-of-the-box thinking established proprietary advancements in production resulting in thinner, lighter and stronger custom orthotics.



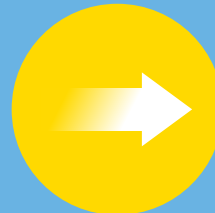
## The Comedian

In the mid-90's Jerry Seinfeld called the lab looking for help. So impressed after traveling to the lab to have his orthotics made, he encouraged them to use his story. An ensuing friendship landed Dennis, Chris and their wives with invitations to a number of Seinfeld shows, including an appearance in the final episode!



## The Doctor

Medical Director since 2018, Timothy Messmer, DPM brings the invaluable experience and insight of a practicing healthcare professional to NWPL. "NWPL's values mirror my own and it's extremely fulfilling to contribute to the success of healthcare professionals and patients who rely on us."



## The Future

NWPL is synonymous with thinking differently and providing exceptional customer care. This spirit demands the constant improvement of a dedicated team who know orthotics like nobody else. NWPL carries a deep sense of pride in its origins and ability to help people today, and for generations to come.

# STEP UP

Phone:

Customer Care, Shipping & General  
800-443-7260

Accounts Receivable & Marketing  
800-675-1766

Hours:

Customer Care  
6:00am - 3:30pm (Pacific)

Billing, Payments & General  
7:30am - 3:30pm (Pacific)

[info@nwpodiatric.com](mailto:info@nwpodiatric.com)

1091 Fir Avenue  
Blaine, WA 98230

[nwpodiatric.com](http://nwpodiatric.com)